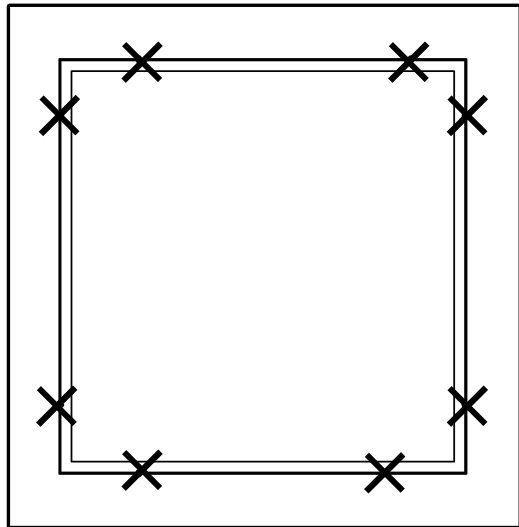


## ZINTRA SHAPES INSTALL GUIDE

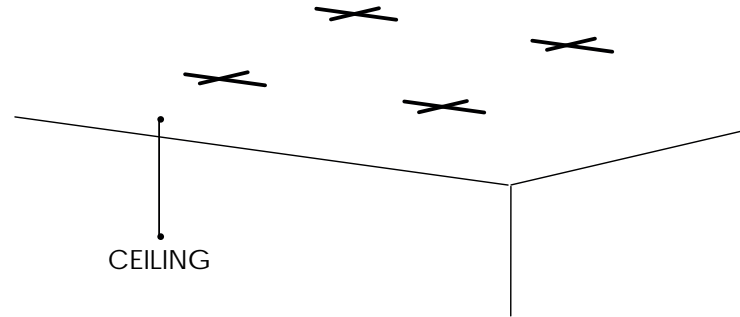


[www.crownsurfacesolutions.com](http://www.crownsurfacesolutions.com)  
e: [info@crownsurfacesolutions.com](mailto:info@crownsurfacesolutions.com)  
p: 416.245.2900

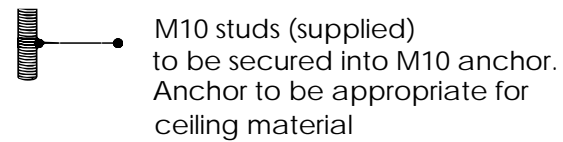
1. Template the applicable suspension points to ceiling substrate per pre-drilled fixing holes (L-angle will be pre-installed to back of shape with pre-drilled fixing holes).



plan view with fixing points



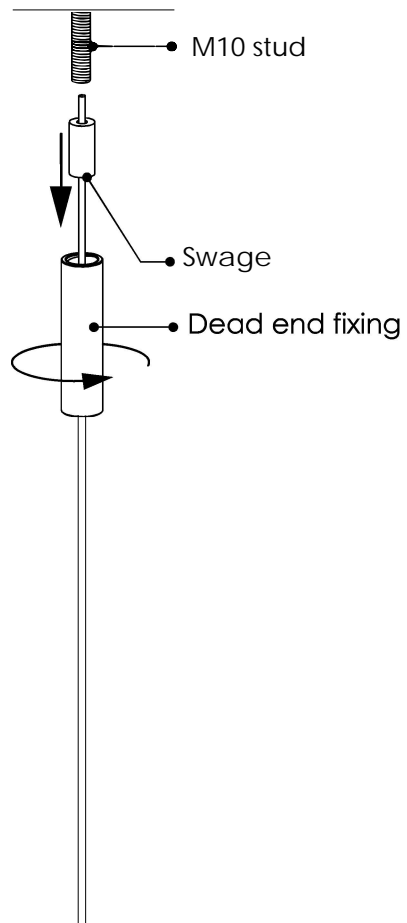
2. Drill and fix off M10 studs (supplied) at M10 ceiling anchor locations



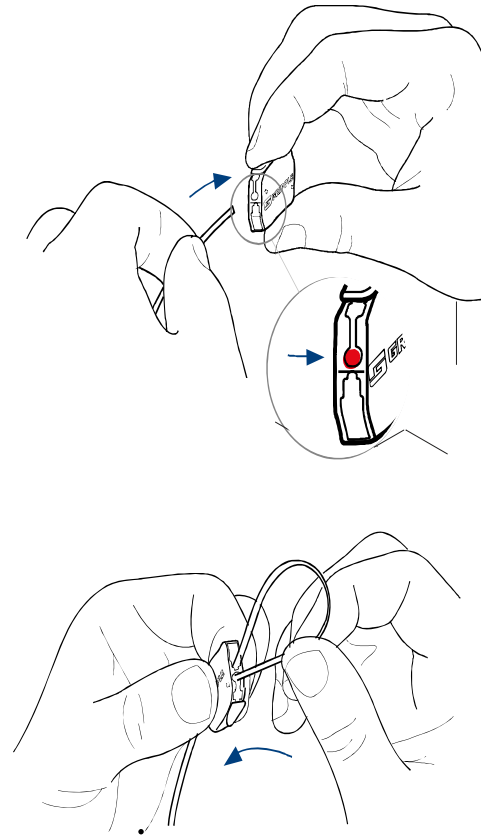
NOTE: All ZIntra Shapes will come with pre-affixed L-angles with pre-drilled mounting holes. 5' suspension kits are also included.

Fixing points are shown for clarity only, actual will differ per shape and size.

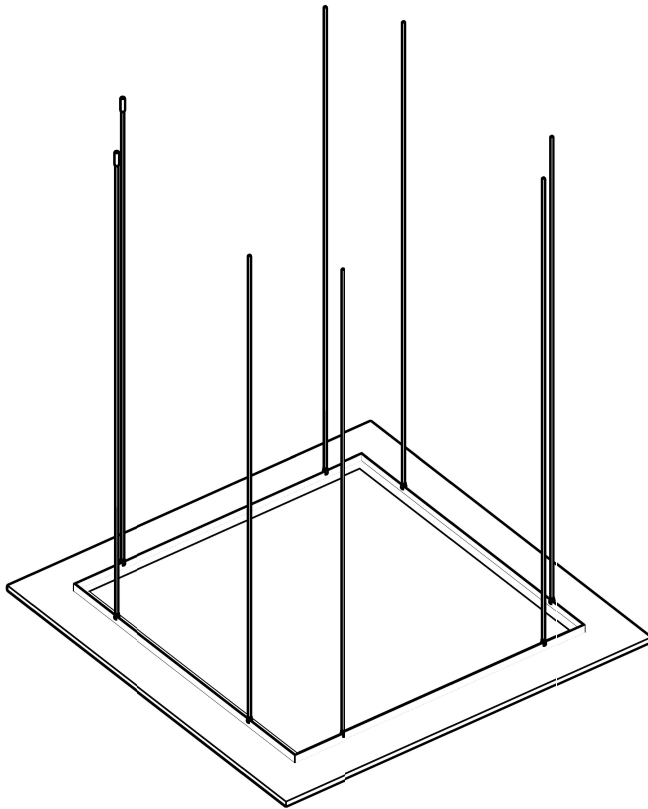
3. Insert the plain end of the supplied wire through the large threaded end of the barrel until the swage end is seated in the barrel. Attach the threaded end of the barrel to the M10 ceiling stud.



4. Insert the plain end of the supplied wire through one side of the gripper adjustment piece. Loop wire around the pre-drilled holes in the provided L-angle mounting. Re-insert plain end of wire once looped into the remaining side of gripper adjustment piece until secure.



5. Repeat step 4 for remaining fixing points



6. Adjust wire suspension height accordingly to ensure level hanging of screen.

